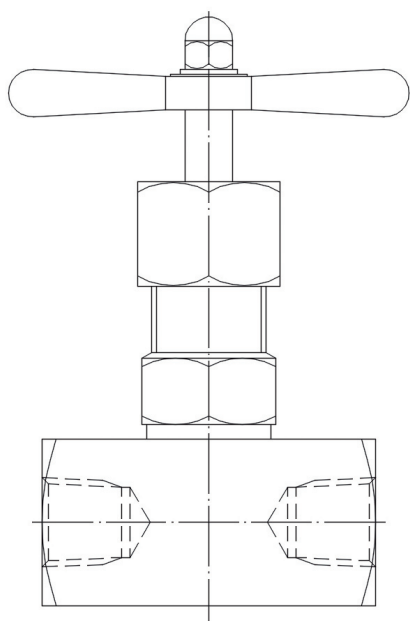


ACCESSORIES

Instrumentation Valve EI-1260

DESCRIPTION: Manual operated valve designed for a wide range of applications.

Body machined in solid bar with threaded bonnet. Economical and simple long-lasting manually operated valve with thread isolated from the process that prevents corrosion, and capable of withstanding high vibrations that minimizes both costs and maintenance operations.



APPLICATIONS

- Instrumentation piping systems.
- Visual level meters.
- In all types of industrial plants such as:
 - Power generation.
 - Chemical and petrochemical industries.
 - Renewable energies.
 - Food industry.
 - Paper factories.
 - Water treatment.

MANUFACTURING

- Design standards:	ASME B16.10 ASME B16.34 ASME B16.37
- Materials:	AISI-316 (Others on request).
- Manufacturing sizes:	1/4", 1/2", 3/4"
- Types of connections:	NPT, Socket-welding, Butt welding, Flanged. (Others on request).

SPECIFICATIONS

- Nominal pressure:	ANSI 1500
- Maximum operating temperature:	340°C

OPTIONS

- Special joints.
- Process connection flange.
- Connection to female process.
- Connection to Socket process.
- O2 service.
- Trim stellited.
- Trim in special material.