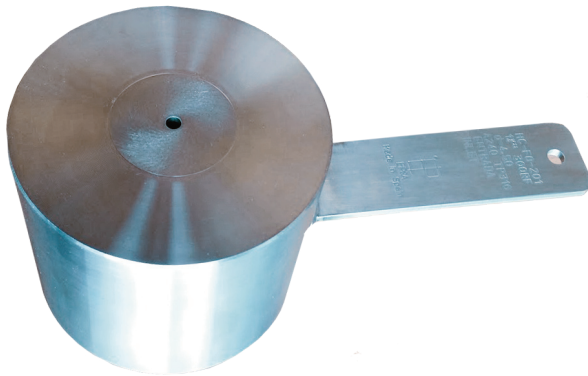
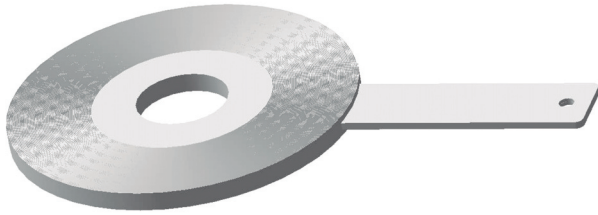


FLOW

Restriction orifice

DESCRIPTION: This device is used to limit the flow in a pipe or to create permanent head loss. They can be built as standard thickness holes, oversized (Thick) or multi-hole.



APPLICATIONS

- Depressurizations for gas and liquids.
- For all types of industrial plants such as:
 - Energy generation.
 - Chemical and petrochemical industries.
 - Renewable energy.
 - Food industry.
 - Water treatment.

DESIGN

- Calculation standards:	ISO 5167-2. ASME MFC-3M Engineering Handbook
- Materials:	Stainless Steel and high alloys (other materials on request).
- Size of Manufacture:	½" – 40"
- Flange finishes:	RF, FF, RTJ.

SPECIFICATIONS

- Beta:	-
- Reynolds:	-
- Accuracy:	2%

NOTES

- **Maximum operating temperature:** According to the rating of the flanges, pipe thickness and materials used.
- **Maximum operating pressure:** According to the flange rating, pipe thickness and materials used.